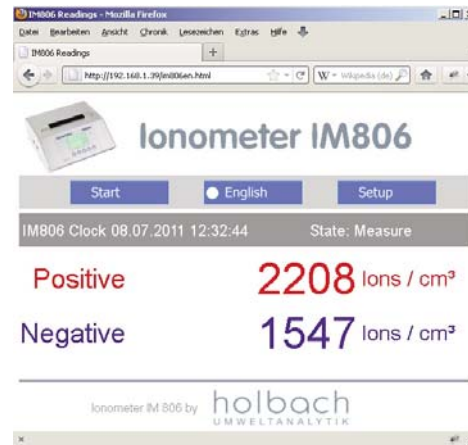


The portable **IM806** ionometer for continuous measurement of air ions

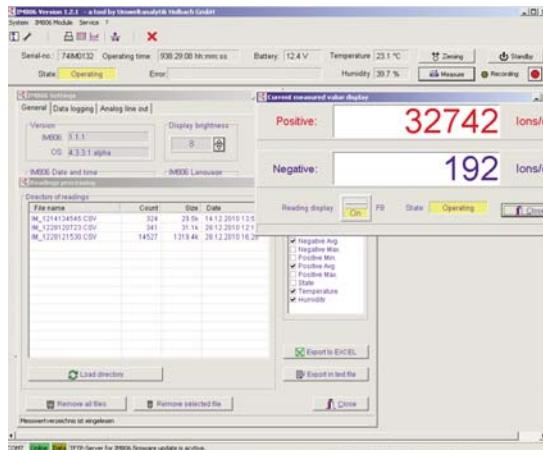


- Two measurement channels for simultaneous measurement of air ions with positive and negative electrical charges respectively
- Wide range of measurement: up to 40,000,000 Ions/cm³
- Illuminated graphic display
- Automatic zero-offset adjustment via servo-driven lock
- Integrated SD memory card
- Fast charger for battery and main power supply (100 ... 240 Volt, 50 / 60 Hz) are included in delivery
- Electrically isolated and configurable analog outputs 0...10 VDC and 0 ... 20 mA DC for both polarities
- Temperature and humidity sensor is optionally available

- Integrated web server for displaying the current measured values and the configuration via a web browser
- The web pages are stored on the integrated SD memory card and can be customized
- ASP Interface for integrating in own web applications
- Integrated FTP Server for downloading the stored data without changing the internal web pages



- Software for configuration and measurement processing of the **IM806** is included in delivery
- Display of the current status, including battery voltage
- The display settings can be enlarged if required, as shown for illustration purposes
- Export of stored readings into MS EXCEL through system software. Initiated via macro for automatically generated analysis, graphics, documentation. Microsoft EXCEL is not included in delivery
- Export of stored readings into CSV formatted text files. Microsoft, Windows and EXCEL are registered trademarks of the Microsoft Corporation
- Integrated TFTP server to download the firmware update via network



For direct measurement at sources and to avoid collision turbulence in air streams, an extension tube is optionally available.



The optional transport case (with blue PE foam including cut outs for the **IM806** and accessories) is available in the colours light grey and anthracite.

Measuring system	Open measuring system without absorbent parts and with two parallel arranged electrodes for simultaneous recording of negatively- and positively-charged air ions.
Measuring scope	Air ions with a ion mobility of 1.3 cm ² /Vs (small ions) and more. ions with lower mobility are partially detected.
Ion polarity	Positively charged air ions and negatively charged air ions at the same time
Flow rate of sample air	24.5 l/min per channel, via integrated fan
Measuring ranges	Eight measuring ranges from 0 ... 1,000 ions/cm ³ up to 0 ... 40,000,000 ions/cm ³ , automatic measuring range switchover
Zero-offset adjustment	Automatic zero-offset adjustment via servo-driven lock, configurable after switching on and in freely definable time intervals
Starting time	Min. 30 seconds, typically: 15 minutes
Ambient temp.	Operation: 0 ... 40 °C, storage temperature: -10 ... 0 ... 50 °C
Display of measured value	Numeric display on backlit LCD display (240 x 128 pixels)
Temperature / humidity	Optional detection of temperature and humidity with integrated sensor in the air channel
Storage of measured values	In CSV format (date, time, max., min., and floating mean of each polarity) on an internal SD memory card, starting time, duration and storage interval all freely definable. Recording of measured values via integrated FTP server and PC software (included in delivery)
Self-monitoring	Battery voltage, fan speed; optical and acoustic (switchable) fault message
Analogue outputs	One output per channel 0...10 VDC / 0 ... 20 mA, lower and upper limiting value definable, both outputs are galvanically separated by the measurement device. Voltage output: min. input resistance of the follow-on device: 10 kOhm Current output: max load resistance of the follow-on device: 400 Ohm
Battery operation	Integrated NiMH battery pack, 12 V / 3 Ah, for 6 hours operation with charged batteries
Mains operations	With plug-in power supply 12V DC / 800 mA with an input voltage of 100 to 240 VAC inc. plug adapter for EU, USA, UK and Australia
Charger	Super-fast charger 1.8 A with an input voltage of 100 to 240 VAC inc. Euro power cable, charging time: approx. 3 hours
Device connections	Recessed on rear of device: Charger / power supply: 2.1 mm low voltage plug (positive terminal on the centre tip), Serial port: 9-pin SubMiniD socket, Analogue outputs: 9-pin SubMiniD plug, Network: 8-pin RJ45 socket Charge balance: 4 mm socket for discharging possibly linked fields and electrical charges
Device configuration	Partially directly via 5 touch keys, otherwise with PC software (included in delivery) for Microsoft Windows via serial interface, German and English operator guidance
Battery for real-time clock	Lithium button cell CR2032
Network services	FTP-Server, Web-Server
Data storage	Internal SD memory card (contained also web pages and system files)
Housing	Anodised aluminium profile housing, 2 tripod sockets UNC 1/4 inch (photo) and UNC 3/8 inch (microphone)
Dimensions	246 mm x 108 mm x 226 mm (B x H x D)
Weight	3.5 kg (without accessories)
EC conformity	Conforms to EU guidelines on electromagnetic compatibility
Guarantee	24 months (limit of 12 months for battery and servo drive)
Note	Subject to technical modifications
Article-No.	01-020E
Accessories (optional)	Temperature and humidity sensor in air outlet (Article No.: 01-024E) Extension tube, 18 cm long (Article No.: 01-026E) Transport case with foam insert for IM806 and accessories, available in colours: light grey (Article No.: 01-252E) and anthracite (Article No.: 01-257E)