

➤ The system for microbiological air samplings



- for examinations of microbiological pollutions in indoor areas
- for hygiene testing of air-conditioning systems
- in clean rooms in the pharmaceutical industry
- in the production of medicaments in pharmacies
- in hygienically-sensitive production areas and facilities in the food industry
- in medical environments with very stringent requirements

Technical Data

Supported sampling heads	Air Sampler LKS100 , Particle Sampler PS 30 , Allergen Sampler AS100	Air Sampler LKS 30 , Filter Adapter FA 30 And (see back)
Sampling air volume	can be preselected from 10 liters up to 10.000 liters	
Volume flow	can be preselected from 30 l/min up to 100 l/min	
Start delay	can be preselected from 1 second up to 24 hours	
Data storage	Ring buffer for data of the recent 100 samplings including the sampling process, exportable onto an USB memory stick and in MBASSControl software (included in delivery)	
Presettings	up to 10 individual presettings (description text, volume flow, volume, start delay, logging of the sampling process)	
Operator guidance	English / German	
Display	illuminated 4.3 inch (109 mm) color display with touchpanel	
Volume flow measurement	integrated volume flow sensor, temperature- and pressure compensated	
Air conveying device	high-performance fan with brushless motor, encapsulated airflow	
Temperature sensor	integrated and connector for external temperature/humidity sensor HC2A-S	
Power supply	lithium-polymer battery pack (up to 22,000 liters of sampling air with LKS100 per charge)	
Charger	100 - 240 Volt AC, charging current max. 2 A	
Dimensions (W x H x D)	180 mm x 160 mm x 255 mm without sampling head	
Weight	2350 g without sampling head, 2750 g with air sampling head 2950 g with particle sampling head, 2670 g with filter adapter	
Tripod sockets	UNC 1/4 inch (photo) and UNC 3/8 inch (microphone)	
Recommended calibration interval	after 150 hours of sampling or every two years	
Warranty	2 years	
Note	Subject to technical changes	

The versatile system

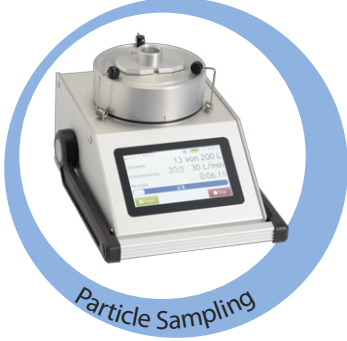


Air Sampling

Air samplings on culture media in 83 - 95 mm standard Petri dishes with the air sampling heads **LKS 30** and **LKS100**. A hose connection for samplings from hollow spaces is standard. **LKS 30** and **LKS100** are validated in accordance with EN ISO 14698-1.

Details:

Air sampling head	LKS 30	LKS100
Nominal volume flow	30 l/min	100 l/min
Number of impaction jets	324	500
Cut off value (d_{ae50})	0.9 μm	1.1 μm



Particle Sampling

Particle sampling with **PS 30** can also capture non-cultivable spores. The evaluation can be done directly after the sampling. This method is ideally suited for remediation inspection. Adhesively coated glass microscope slides are offered as sampling medium. Up to three samplings can be drawn on one slide.



Filtration on Gelatine Filters

The filter adapter **FA 30** is used for filtration on round sterile 80 mm gelatine filters. The special operating mode "Filter Mode" of **MBASS30v3** allows to reliably pre-select high air flows.



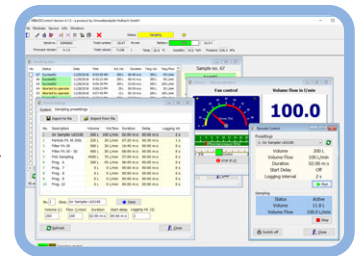
Allergen Sampling

With the allergen sampling head **AS100**, airborne particles are directly deposited into a microtiter strip. Because of this, no external extraction is required for the evaluation with ELISA and small allergen concentrations can be reliably detected as well.



Isokinetic Sampling

For isokinetic samplings in larger air ducts, the transverse adapter and suitable intake nozzles are available for the air sampling heads **LKS 30** and **LKS100**. It is also possible to load 50 mm PU foam cylinders (without glass fiber pre-filter) for chemical samplings with the transverse adapter.



The MBASSControl software for Microsoft Windows is included in the delivery of **MBASS30v3**.



Handling Cases

