

► The accurate and convenient system for air samplings



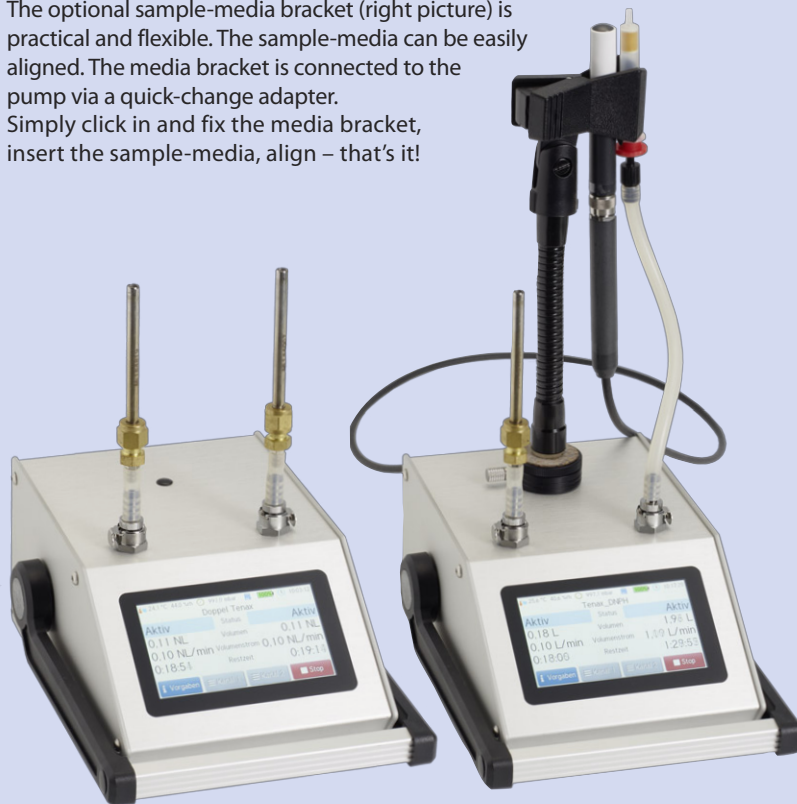
- 2 air samplings at the same time, even with different sample-media
- 10 editable presetting programs
- Standard, Norm and volumetric liters
- accurate control unit in each channel
- BiVOCControl software included in delivery
- History containing the data of the recent 100 samplings
- Logging of the sampling process with climate data onto an internal 1GB microSD card

Technical Data

Number of sampling channels	2 individually controlled channels
Volume flow	0.05 up to 2.0 SL/min pre-settable per channel. Sum of both channels max. 3.2 SL/min
Sampling air volume	0.5 up to 5,000 SL (StandardLiters: 0 °C / 1013 hPa), NL (NormLiters: Reference temperature and pressure can be configured) and L (Liters: at current temperature and pressure, using the optional temperature sensor HC2A-S)
Data storage	Ring buffer for data of the recent 100 samplings including the sampling process, exportable onto a USB memory stick and in BiVOCControl software (included in delivery)
Start delay	configurable for each channel from 1 second up to 24 hours
Interval mode	configurable to extend the sampling duration for combined samplings with the same time window (to avoid possible overload of the sample-media)
Presettings	up to 10 presettings (volume, volume flow, volume type, flow monitoring, interval mode, start delay per channel, logging interval)
Display and operation	illuminated 4.3 inch (109 mm) color display with touchpanel
Accuracy	Volume flow: ± 2.0 % of the measured value plus ± 0.002 SL/min Volume: ± 2.5 % of the measured value
Air conveying mechanism	maintenance-free membrane pump with controlled brushless drive
Sample air inlet and pump output	lockable 3/16" plug-in couplings
Power supply	internal Lithium-Polymer battery pack (up to 15 hours of operation at 2 x 0.1 L/min)
Charger	100 - 240 Volt AC, charging current max. 2 A, included in delivery
Communication connections	Mini USB socket for PC connection and USB type A for USB memory stick on the rear side
PC software	BiVOCControl for Microsoft Windows 7 and higher included in delivery
Dimensions (W x H x D) / Weight	180 mm x 125 mm x 255 mm / 2440 g
Tripod sockets	UNC 1/4 inch (photo) and UNC 3/8 inch (microphone) in the device base

The sample-media can be directly connected to the hose fittings of **BiVOC2v2** with a short piece of hose.

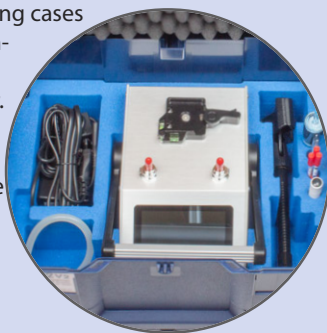
The optional sample-media bracket (right picture) is practical and flexible. The sample-media can be easily aligned. The media bracket is connected to the pump via a quick-change adapter. Simply click in and fix the media bracket, insert the sample-media, align – that's it!



Handling case for BiVOC2v2

For transporting **BiVOC2v2** optional handling cases (systainer³ M237) are available. The fitting foam insert has got additional slots for sample-media, hoses and further accessories.

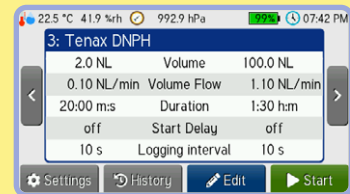
The handling cases can be connected to each other. They are available in sapphire blue, anthracite and light gray.



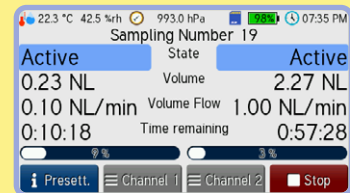
Ordering information

Configuration / Accessories	Article no.
BiVOC2v2 with charger, handbook, PC software, calibration certificate	01-315
Sample-media bracket for BiVOC2v2 (optional)	01-350
Temperature and humidity sensor rotronic HC2A-S	01-332
Handling case with sapphire body, red handle and catch	01-266

Details that matter!



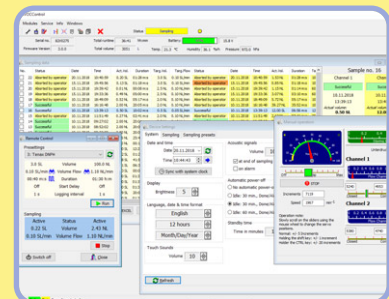
All important data is always present in the display. Select preset program, tap the start button and the sampling begins.



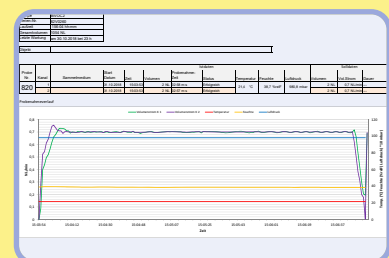
During sampling, **BiVOC2v2** continuously shows all relevant data on the illuminated display.



The data of the recent 100 samplings can be seen in the history view.



The **BiVOCControl** software for configuration, data transfer and readjustment is included in the delivery.



The sampling process can be exported to Microsoft EXCEL* with one click to be presented in a chart.

*EXCEL is not included

